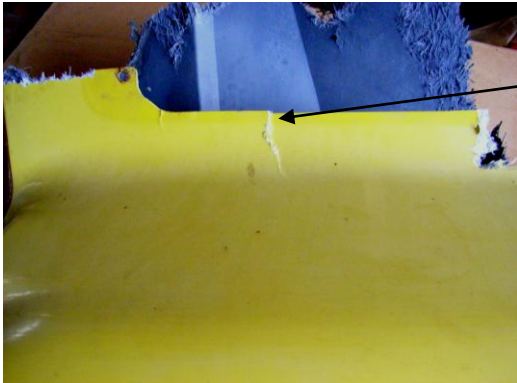





# DRIVE Marine Services

## FRP CRACK REPAIR

### FRP Crack Repair

<p>Cracks in panels such as the one at (1) can be easily repaired using Epoxy Resin and Fibreglass tape or 200gram cloth.</p> <p><b>NOTE: 1.</b> Be mindful that polyester and vinylester resins are very poor adhesives and should never be used to carry out fibreglass repairs as they will delaminate easily.</p> <p><b>2.</b> Refer to DRIVE Marine Services information sheets on FRP Explained, Fibreglass Repairs &amp; Why Bote Cote for further information or <a href="http://www.BoatCraftNSW.com.au">www.BoatCraftNSW.com.au</a>.</p>	
<p><b>Step 1</b> – Use a 100mm angle grinder with a 40 grit sanding disc and grind a gutter in the area of the crack and take it at least 50mm from all edges.</p> <p><b>NOTE: 1.</b> Do not grind through and leave a gap as this makes it harder to fill to an even finish.</p> <p><b>2.</b> It is better to repeat the process on the reverse side of the panel after the 1<sup>st</sup> side has been fibreglassed.</p>	
<p><b>Step 2</b> – Mix Bote Cote Resin at 2:1 ratio and apply a wet out coat to the surface being repaired.</p> <p><b>Step 3</b> – lay multiple layers of fibreglass tape or cloth starting with approx. 25mm wide out to 75 to 100mm wide depending on the extent of the ground out area. The aim being to fill the ground out area.</p>	
<p><b>Step 4</b> – Use a fibreglass consolidating roller to roll out air bubbles and push the fabric into the resin.</p>	

*For a Comprehensive Range of Boat Building requirements including*

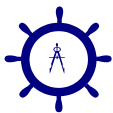
**Bote Cote** 2:1 Epoxy Resin, Fillers, **Pour-on-Gloss** Decoupage Coating, **COP-R-BOTE** Epoxy Antifouling, **AQUACOTE** Polyurethane Coatings, **PURBOND** Waterproof Single Pack Glue, **TREDGRIP** Rubberised non-slip Paint, **Fibreglass** & Carbon Reinforcing Fabrics, **FERONITE** Rust converter and Primer, Marine, Proof & Aircraft **Plywoods**, **NIDAPLAST** Composites, **DAVEY** Traditional Bronze & Marine Fittings

BEVERLY HILLS NSW 2209

Ph. (O)02 9533 5470

(F)02 9594 4250

Email- [Bote.Cote@optusnet.com.au](mailto:Bote.Cote@optusnet.com.au)

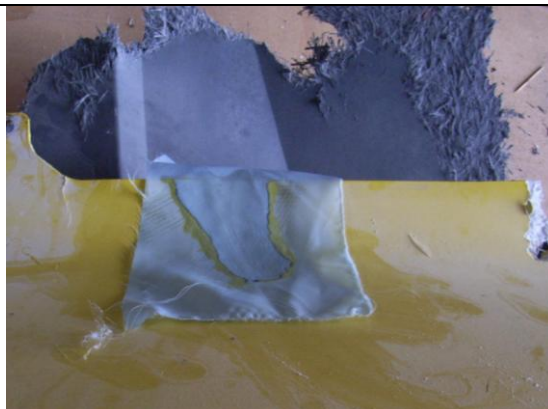


# DRIVE Marine Services

## FRP CRACK REPAIR

**Step 5** – Apply peelply over the wet resin once the fibreglass tape is applied to strengthen the joint and it is built up adequately. Leave it on until the epoxy is cured or until ready to fair the panel.

**NOTE: 1.** Refer to DRIVE Marine Services information sheets on Peelply or [www.BoatCraftNSW.com.au](http://www.BoatCraftNSW.com.au).



**Step 1** – Mix filler and apply over the repaired surface and over fill slightly. Once cured sand the surface flat ready to paint.



Examples of repairs to fibreglass panels.



For further information or technical assistance we look forward to you contacting us.

*For a Comprehensive Range of Boat Building requirements including*

**Bote Cote** 2:1 Epoxy Resin, Fillers, **Pour-on-Gloss** Decoupage Coating, **COP-R-BOTE** Epoxy Antifouling, **AQUACOTE** Polyurethane Coatings, **PURBOND** Waterproof Single Pack Glue, **TREDGRIP** Rubberised non-slip Paint, **Fibreglass** & Carbon Reinforcing Fabrics, **FERONITE** Rust converter and Primer, Marine, Proof & Aircraft **Plywoods**, **NIDAPLAST** Composites, **DAVEY** Traditional Bronze & Marine Fittings

BEVERLY HILLS NSW 2209

Ph. (O)02 9533 5470

(F)02 9594 4250

Email- [Bote.Cote@optusnet.com.au](mailto:Bote.Cote@optusnet.com.au)